

About the Population:

Youth included in these reports are in the care of NYS OMH operated outpatient Clinic and Day Treatment Programs. Youth discharged within 30 days of the report date are excluded from analysis. The Youth Health Indicator Monitoring program began 6/15/09. Three reports have been produced during the inception phase of the project (6/15-10/30/09). Reports are scheduled to be produced on a quarterly basis starting the December 30, 2009 report cycle. All data are extracted from the MHARS system for analysis. Report is produced by NYS OMH Performance Management and Evaluation analysts R. Wang, J. Foster and M. Radigan.

Indicator Definitions:

BMI Percentile indicator: is calculated using Growth Chart Percentile for youth aged 0-18 and BMI Ratio for youth aged 19-22: $[\text{Weight (lbs)}/\text{height (inches)}^2] \times 703$. Normal weight is calculated as number in 5th-84.9th percentile and BMI 18.5-24.9. Overweight is calculated as number in 85th percentile or greater for youth 0-18, and BMI 25 or greater for youth 19-22. Obesity is calculated as number in 95th percentile or greater for youth 0-18, and BMI 30 or greater for youth 19-22.

Low activity indicator: refers to less than 60 minutes of physical activity per day.

Smoking indicator: Had a puff of a cigarette or more in the past month - Yes

Substance Use indicator: Used alcohol or street drugs or any substance in the last month to make yourself feel better or get high - Yes

CRAFFT Indicator : Positive result is a score of 2 or more (PART B) or a positive response to item 1 (PART B) on this behavioral health screening tool.

About the Measures:

Smoking, Substance Use and CRAFFT measures are self-report measures designed to be collected on Youth over the age of 12 only. Note that all measures with the exception of CRAFFT are to be updated on a quarterly basis for each youth in care. CRAFFT is updated annually.

CRAFFT is an alcohol and substance use screening tool for use with adolescents. It was developed by the Center for Adolescent Substance Abuse Research at Children's Hospital Boston. It contains two parts with specific cut off points for screening purposes.

Smoking: Have you had a puff of a cigarette or more in the past month (Yes/No)?

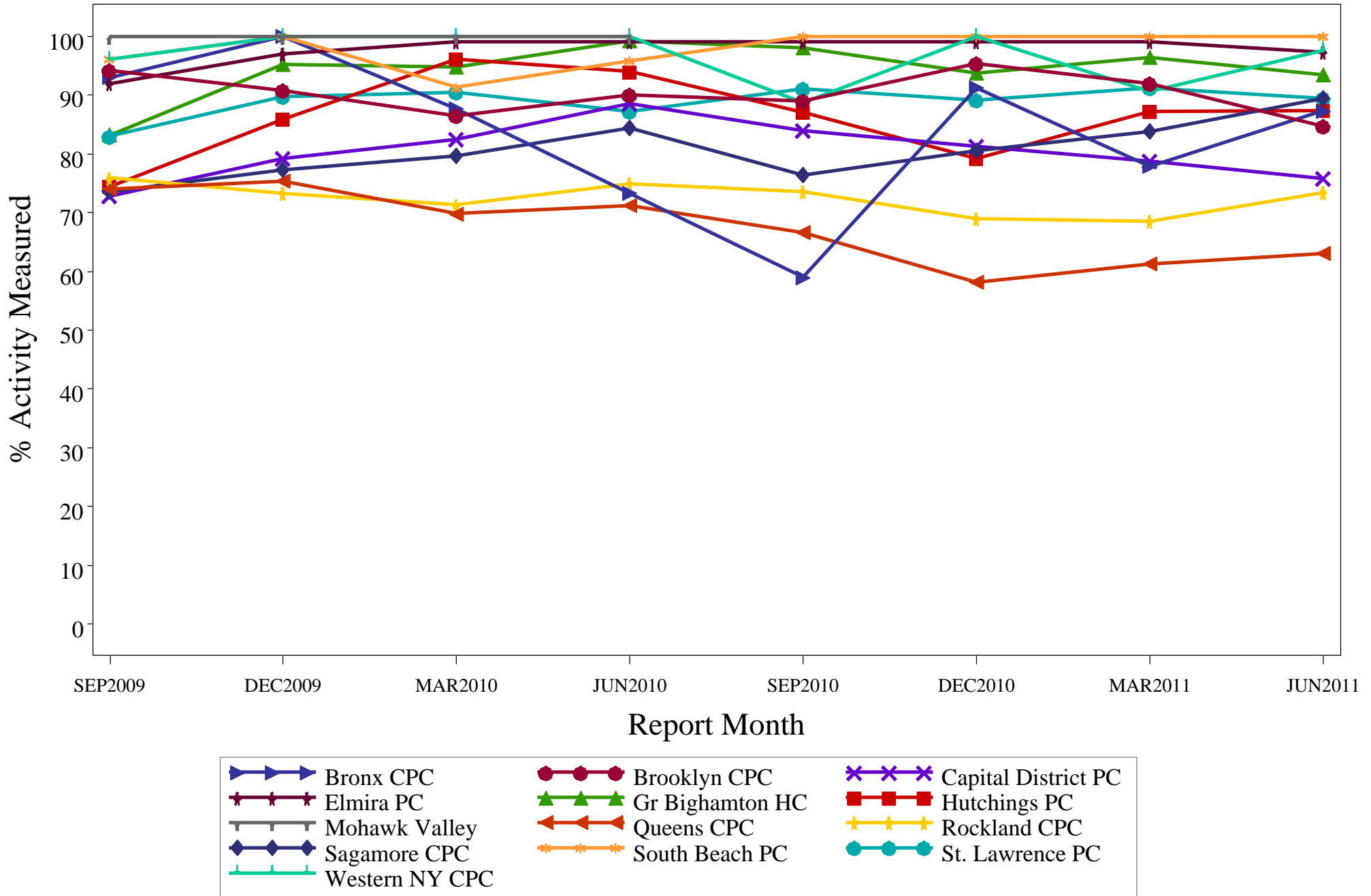
Substance Use: Have you used alcohol or street drugs or any substance in the last month to make yourself feel better or get high?

-- TABLE OF CONTENTS --

Page 3	Graph 1 - Youth Outpatient Activity Measured over Time by Facility
Page 4	Table 1 - Youth Outpatient Activity Measured over Time by Facility
Page 5	Graph 2. Youth Outpatients with Activity Measurement Ever vs Current Period
Page 6	Graph 3. Percent of Youth Outpatients with Low Activity Levels
Page 7	Table 2. Youth Activity Measurement by Facility
Page 8	Graph 4. Youth Outpatient BMI Percentile Measured by State Facility over Time
Page 9	Table 3. Youth Outpatient BMI Percentile Measured over Time by Facility
Page 10	Graph 5. Youth Outpatient BMI Percentile Measure Reported Ever vs Current Period
Page 11	Graph 6. Percent of Youth Outpatient with BMI Percentiles in Overweight and Obese Categories
Page 12	Graph 7. Distribution of BMI Percentile in Youth Outpatient Population
Page 13	Table 4. BMI Percentiles by Facility
Page 14	Graph 8. Youth Outpatients with Smoking Measured Ever vs Current Period
Page 15	Graph 9. Percent of Youth Outpatients Aged 13 and Older who Smoke
Page 16	Table 5. Youth Smoking Measure (All Ages) by Facility
Page 17	Table 6. Youth Smoking Measure by Age Group by Facility
Page 18	Graph 10. Youth Outpatients with Substance Use Measured Ever vs Current Period
Page 19	Graph 11. Percent of Youth Outpatients Aged 13 and Older who Use Substances
Page 20	Table 7. Youth Substance Use (All Ages) by Facility
Page 21	Table 8. Youth Substance Use by Age Group by Facility
Page 22	Graph 12. Youth CRAFFT Measurement - Older vs Younger Youth
Page 23	Graph 13. Percent of Youth Outpatients Aged 13 and Older who Have a Positive CRAFFT
Page 24	Table 9. CRAFFT Measurement (All Ages) by Facility
Page 25	Table 10. CRAFFT Measurement by Age Group by Facility
Page 26	Graph 14. Rates of Low Activity Overweight and Obesity in Youth Outpatients
Page 27	Graph 15. Rates of Smoking, Substance Use and CRAFFT in Youth Outpatients 13 & Older
Page 28	Graph 16. Statewide Age Comparison (w/ accompanying table)
Page 29	Graph 17. Statewide Program Type Comparison (w/ accompanying table)
Page 30	Graph 18. Statewide Gender Comparison (w/ accompanying table)
Page 31	Graph 19. Distribution of BMI Percentile for Youth (Ages 17 and Younger) by Program Type
Page 32	Table 11. Distribution of BMI Percentile for Youth (Ages 17 and Younger) by Program Type
Page 33	Graph 20. Distribution of BMI for Youth (Ages 18 and Older) by Program Type (w/ accompanying table)

Youth Health Indicators

Graph 1. Youth Outpatient Activity by State Facility over Time



Youth Health Indicators

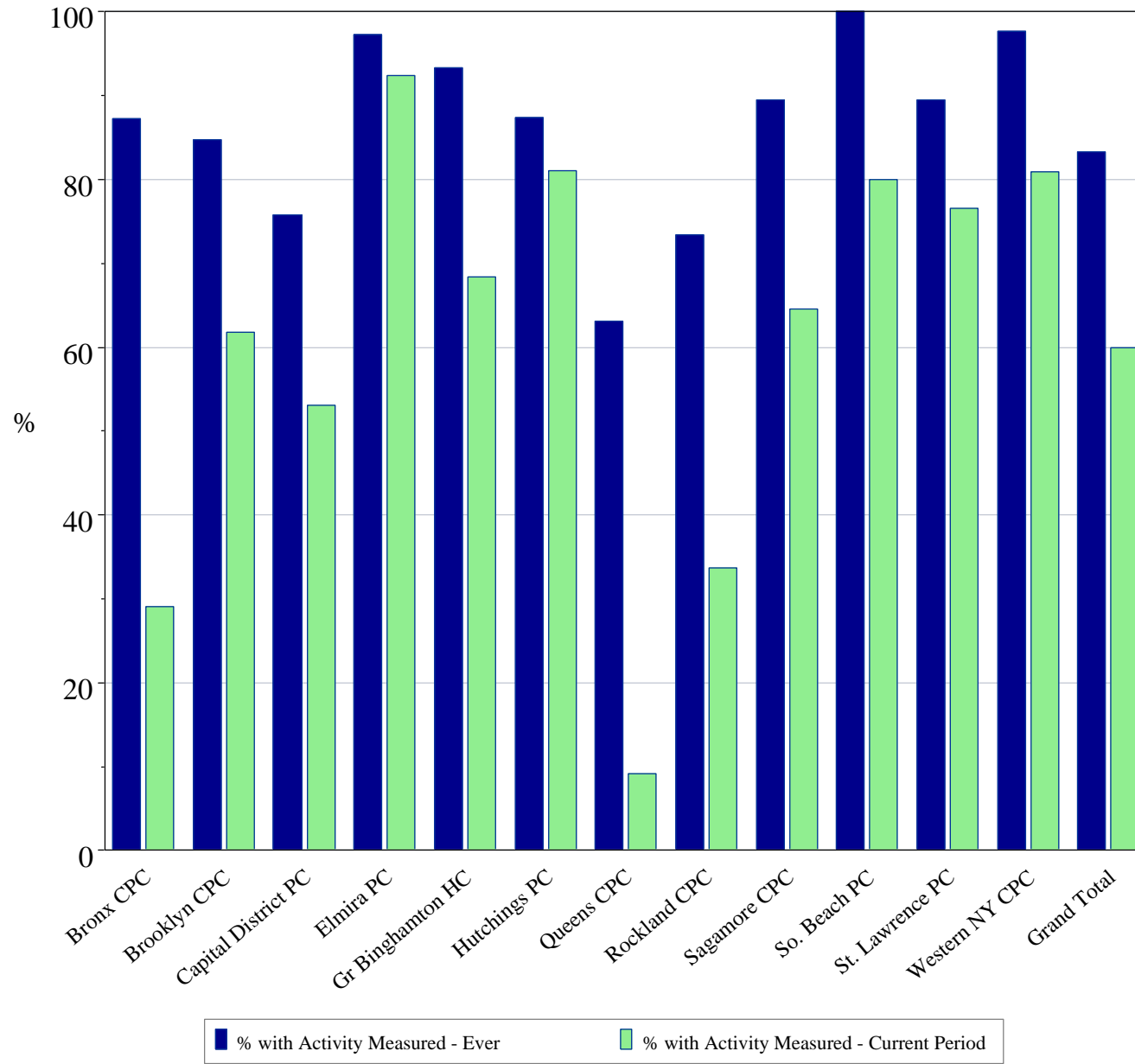
Table 1. Youth Outpatient Activity by Facility, Measured over Time (by quarters)

Facility	% Activity Measured							
	SEP2009	DEC2009	MAR2010	JUN2010	SEP2010	DEC2010	MAR2011	JUN2011
Bronx CPC	93.1	100.0	87.7	73.2	59.0	91.2	77.9	87.3
Brooklyn CPC	94.2	90.8	86.5	90.0	89.0	95.4	92.0	84.8
Capital District PC	72.8	79.3	82.5	88.5	83.9	81.3	78.8	75.8
Elmira Psychiatric Center	91.9	97.0	99.0	99.1	99.1	99.0	99.1	97.3
Greater Binghamton Health Center	83.2	95.2	94.9	99.2	98.0	93.8	96.4	93.4
Hutchings Psychiatric Center	74.4	85.9	96.2	94.0	87.1	79.2	87.2	87.4
Mohawk Valley Psych Ctr	100.0	100.0	100.0	100.0
Queens CPC	74.0	75.4	69.8	71.2	66.7	58.1	61.2	63.1
Rockland CPC	75.9	73.3	71.3	74.9	73.6	69.0	68.5	73.4
Sagamore Children's Psych Ctr	73.6	77.3	79.6	84.4	76.4	80.6	83.8	89.5
South Beach PC	96.2	100.0	91.3	95.8	100.0	100.0	100.0	100.0
St. Lawrence Psychiatric Center	83.0	89.8	90.6	87.2	91.1	89.1	91.2	89.5
Western NY CPC	96.2	100.0	100.0	100.0	88.6	100.0	90.7	97.7
-- Grand Total --	80.0	84.4	84.1	86.0	83.1	81.7	82.5	83.4

Data Source: MHARS as of September 29, 2009; December 31, 2009; March 31, 2010; June 30, 2010; September 30, 2010; December 31, 2010; March 31, 2011 and June 30, 2011.

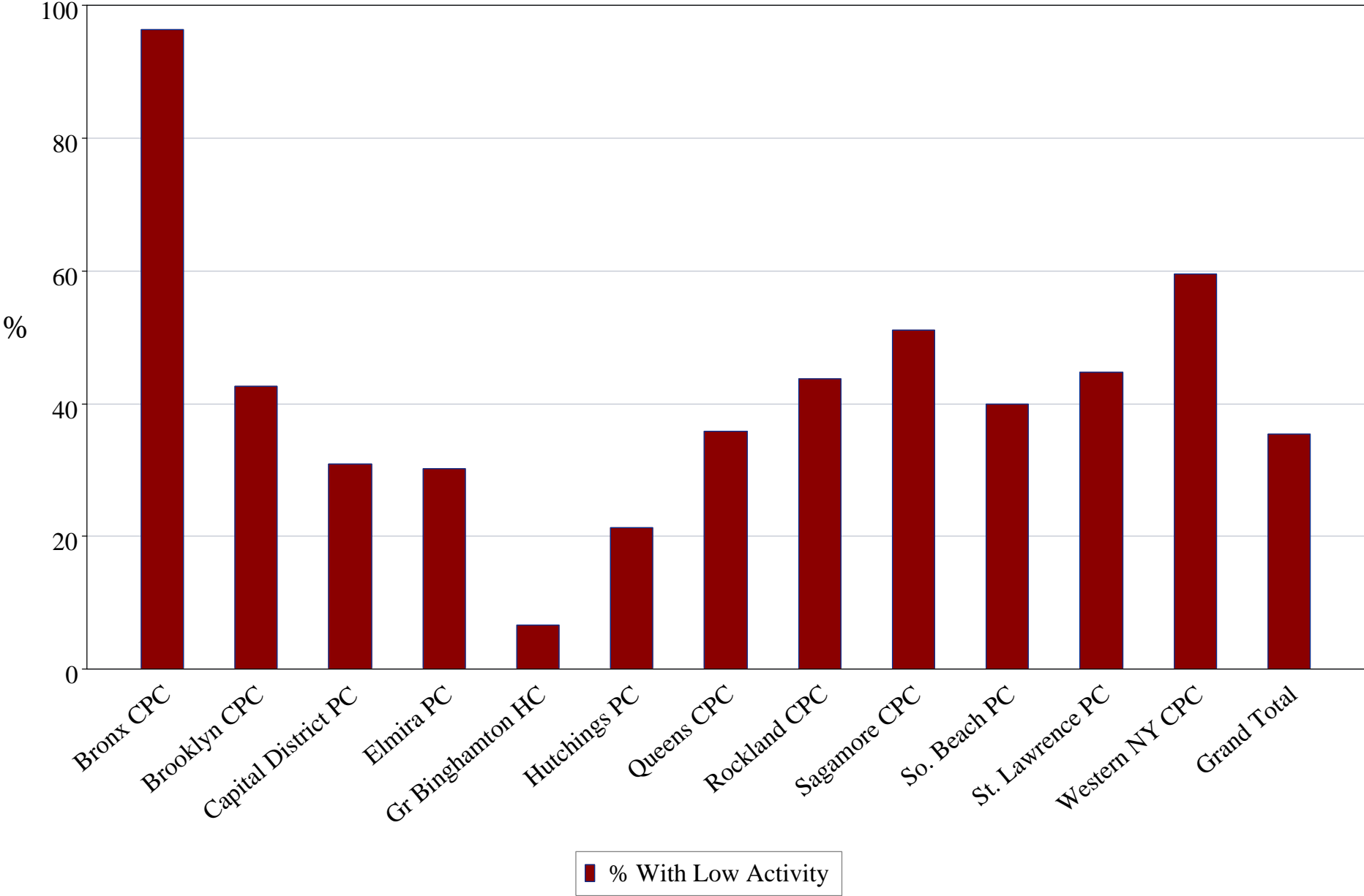
Youth Health Indicators

Graph 2. Youth Outpatients with Activity Measurement Ever vs Current Period



Data Source: MHARS as of Jun 30th, 2011.
 Current Period is Apr 1 - Jun 30, 2011.

Graph 3. Percent of Youth Outpatients with Low Activity Levels



Data Source: MHARS as of Jun 30th, 2011.
Current Period is Apr 1 - Jun 30, 2011.

Youth Health Indicators

Table 2. Youth Activity Measurement by Facility

Facility	# Youth	# Activity Measured	% Activity Measured	% Activity Measured Current Period	# Low Activity	% Low Activity
Bronx CPC	63	55	87.3	29.1	53	96.4
Brooklyn CPC	105	89	84.8	61.8	38	42.7
Capital District PC	231	175	75.8	53.1	54	30.9
Elmira Psychiatric Center	109	106	97.3	92.5	32	30.2
Greater Binghamton Health Center	288	269	93.4	68.4	18	6.7
Hutchings Psychiatric Center	253	221	87.4	81.0	47	21.3
Queens CPC	225	142	63.1	9.2	51	35.9
Rockland CPC	327	240	73.4	33.8	105	43.8
Sagamore Children's Psych Ctr	199	178	89.5	64.6	91	51.1
South Beach PC	20	20	100.0	80.0	8	40.0
St. Lawrence Psychiatric Center	257	230	89.5	76.5	103	44.8
Western NY CPC	43	42	97.7	81.0	25	59.5
-- Grand Total --	2,120	1,767	83.4	60.0	625	35.4

Note: Youth included in these reports are in the care of NYS OMH operated outpatient Clinic and DayTreatment Pgms.

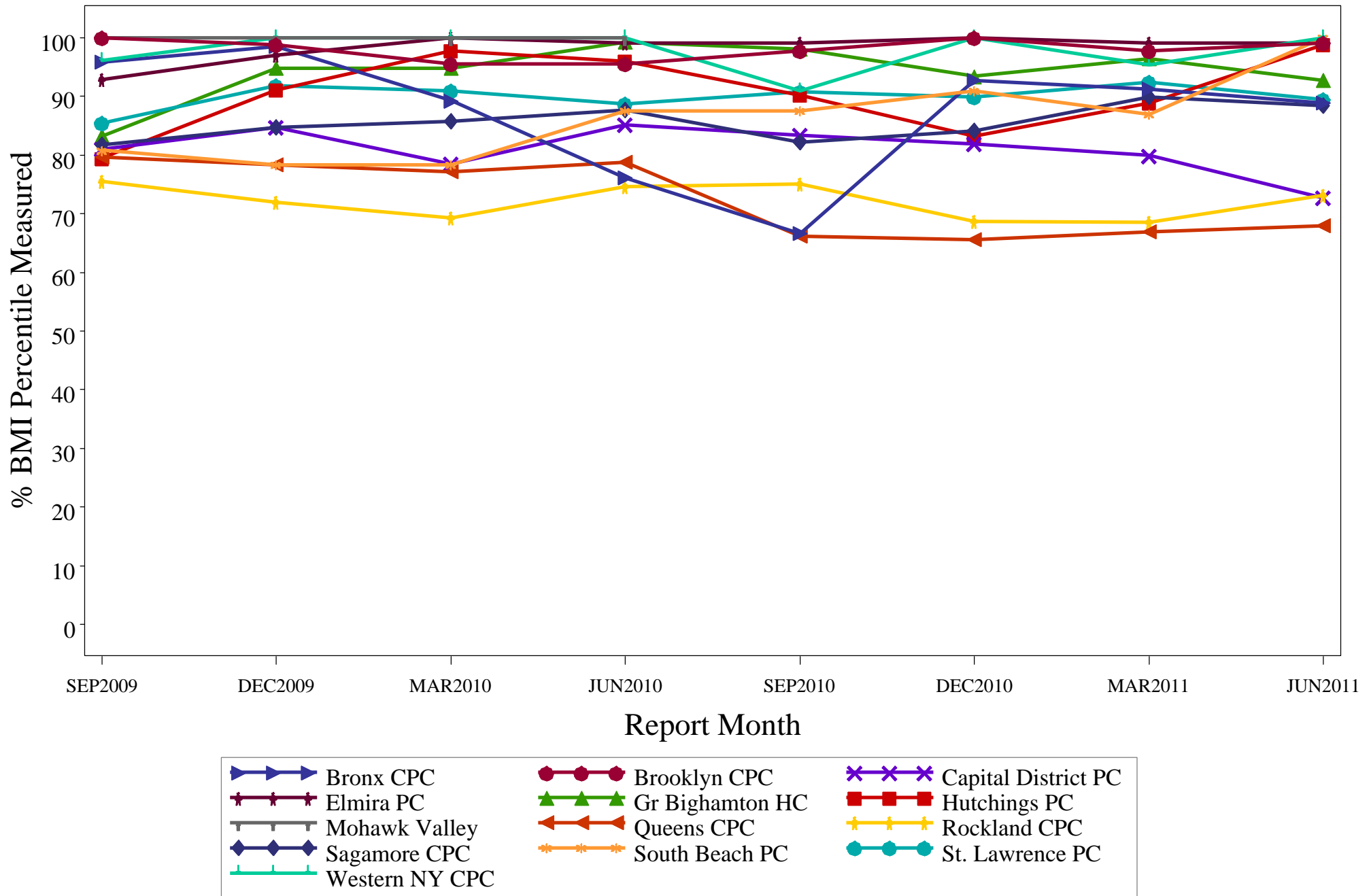
Low Activity indicator refers to less than 60 minutes of physical activity per day.

Data Source: MHARS as of Jun 30th, 2011.

Current Period is Apr 1 - Jun 30, 2011.

Youth Health Indicators

Graph 4. Youth Outpatient BMI Percentile Measured by State Facility over Time



Youth Health Indicators

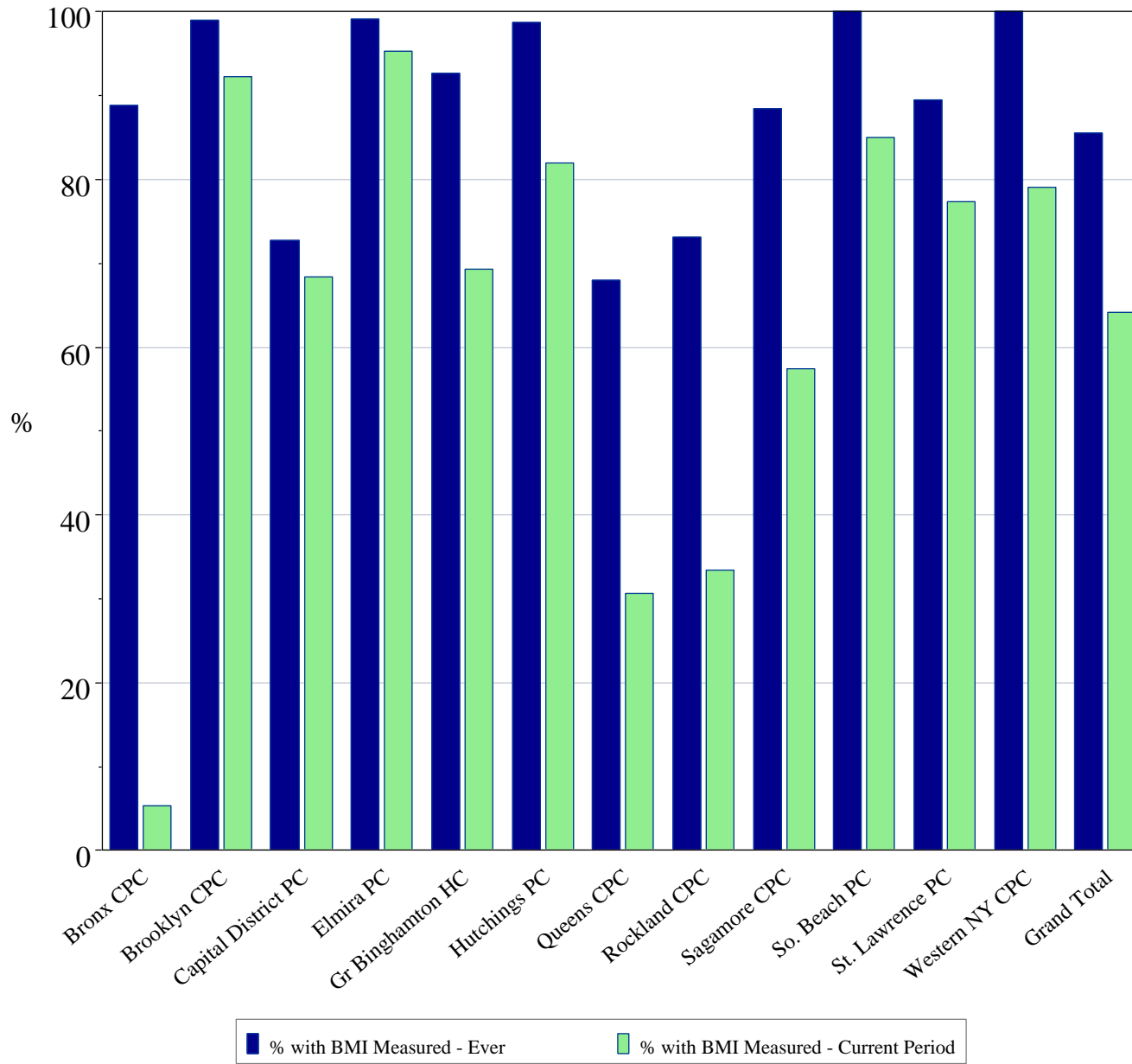
Table 3. Youth Outpatient BMI Percentile Measured over Time by Facility

Facility	% BMI Percentile Measured							
	SEP2009	DEC2009	MAR2010	JUN2010	SEP2010	DEC2010	MAR2011	JUN2011
Bronx CPC	95.8	98.5	89.2	76.1	66.7	92.7	91.2	88.9
Brooklyn CPC	100.0	98.9	95.5	95.6	97.8	100.0	97.7	99.1
Capital District PC	81.0	84.8	78.5	85.2	83.4	81.8	79.9	72.7
Elmira Psychiatric Center	92.9	97.0	100.0	99.1	99.1	100.0	99.1	99.1
Greater Binghamton Health Center	83.2	94.8	94.9	99.2	98.0	93.4	96.4	92.7
Hutchings Psychiatric Center	79.4	91.1	97.8	96.0	90.2	83.2	88.9	98.8
Mohawk Valley Psych Ctr	100.0	100.0	100.0	100.0
Queens CPC	79.6	78.4	77.1	78.8	66.2	65.5	67.0	68.0
Rockland CPC	75.6	71.9	69.2	74.6	75.0	68.8	68.5	73.1
Sagamore Children's Psych Ctr	81.7	84.7	85.8	87.7	82.2	84.2	89.9	88.4
South Beach PC	80.8	78.3	78.3	87.5	87.5	90.9	87.0	100.0
St. Lawrence Psychiatric Center	85.4	91.8	90.9	88.8	90.7	89.9	92.4	89.5
Western NY CPC	96.2	100.0	100.0	100.0	90.9	100.0	95.4	100.0
-- Grand Total --	83.2	86.4	85.3	87.4	84.6	83.4	84.8	85.6

Data Source: MHARS as of September 29, 2009; December 31, 2009; March 31, 2010; June 30, 2010; September 30, 2010; December 31, 2010; March 31, 2011 and June 30, 2011.

Youth Health Indicators

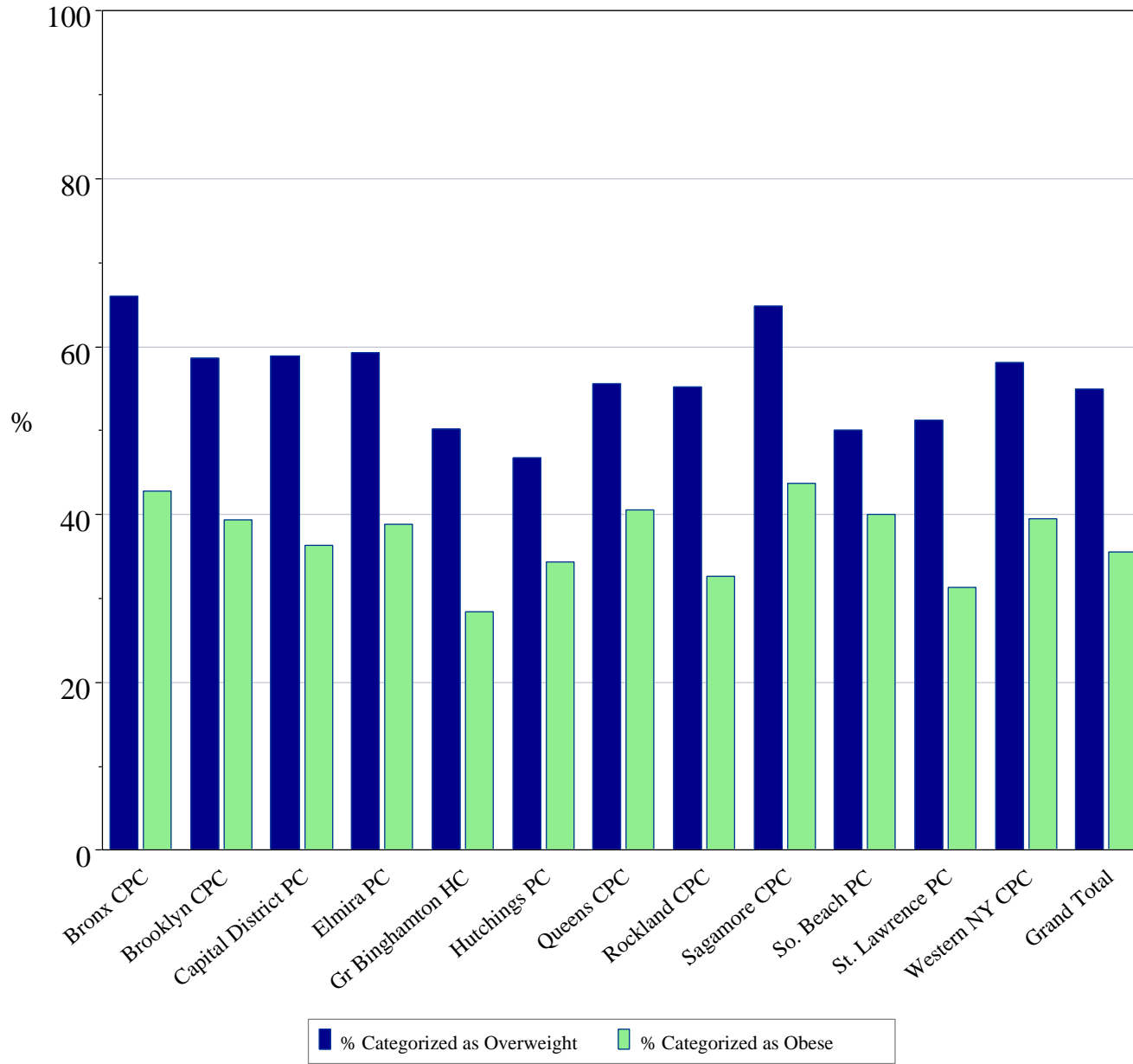
Graph 5. Youth Outpatient BMI Percentile Measure Reported Ever vs Current Period



Data Source: MHARS as of Jun 30th, 2011.
 Current Period is Apr 1 - Jun 30, 2011.

Youth Health Indicators

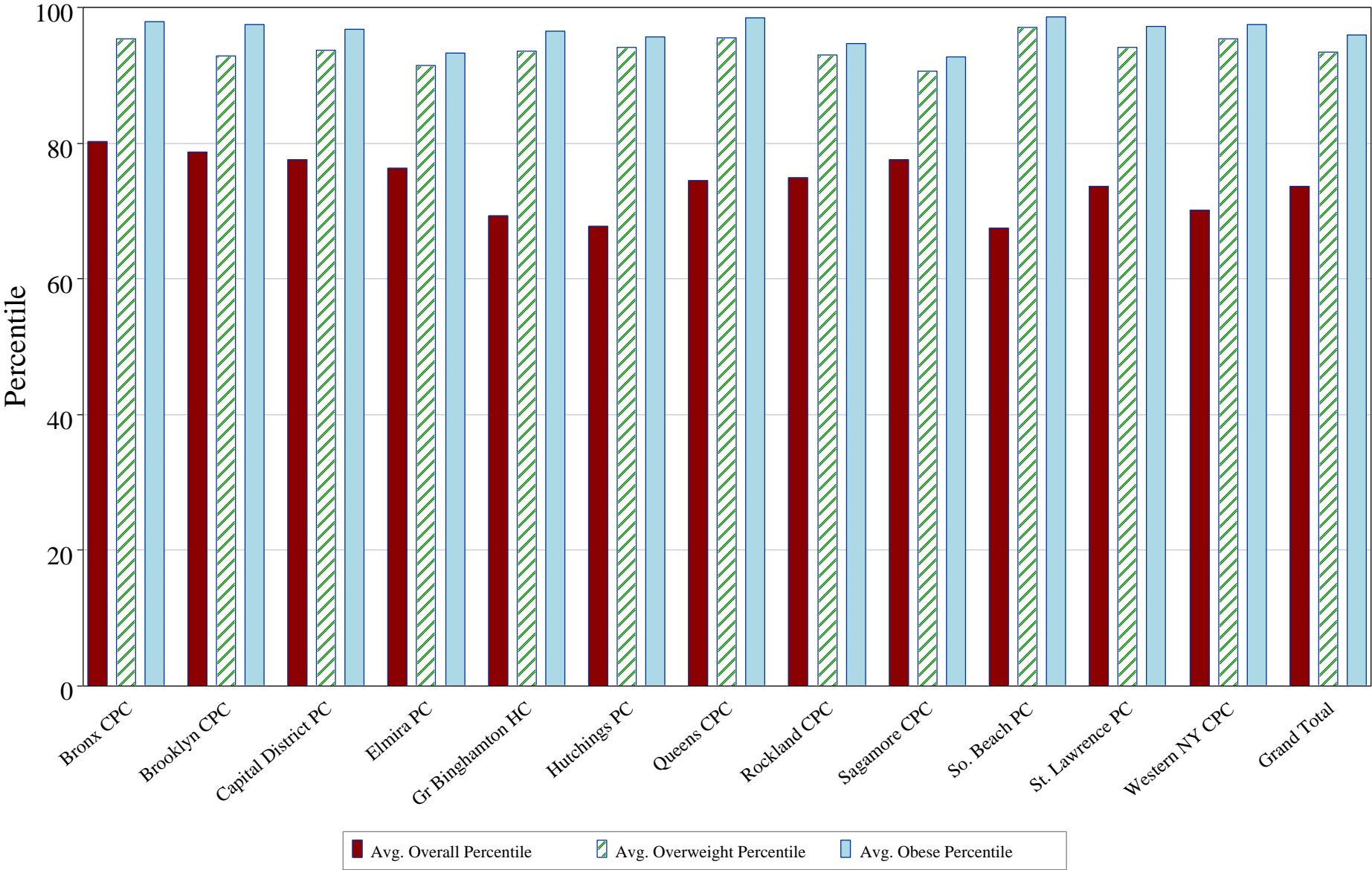
Graph 6. Percent of Youth Outpatient with BMI Percentiles in Overweight and Obese Categories



Data Source: MHARS as of Jun 30th, 2011.
Current Period is Apr 1 - Jun 30, 2011.

Youth Health Indicators

Graph 7. Distribution of BMI Percentile in Youth Outpatient Population



Data Source: MHARS as of Jun 30th, 2011.
 Current Period is Apr 1 - Jun 30, 2011.

Youth Health Indicators

Table 4. BMI Percentiles by Facility

Facility	# Youth	# BMI Percentile Measured	% BMI Percentile Measured	% BMI Measured Current Period	% Normal Weight	% Over-weight	% Obese	Avg Overall Pctile	Avg Normal Pctile	Avg Overweight Pctile	Avg Obese Pctile
Bronx CPC	63	56	88.9	5.4	33.9	66.1	42.9	80.3	50.9	95.5	98.0
Brooklyn CPC	105	104	99.1	92.3	41.4	58.7	39.4	78.7	57.9	92.9	97.5
Capital District PC	231	168	72.7	68.5	40.5	58.9	36.3	77.6	55.2	93.8	96.9
Elmira Psychiatric Center	109	108	99.1	95.4	40.7	59.3	38.9	76.3	54.4	91.5	93.3
Greater Binghamton Health Center	288	267	92.7	69.3	44.9	50.2	28.5	69.3	49.9	93.6	96.6
Hutchings Psychiatric Center	253	250	98.8	82.0	48.0	46.8	34.4	67.7	49.2	94.1	95.7
Queens CPC	225	153	68.0	30.7	40.5	55.6	40.5	74.5	52.7	95.6	98.5
Rockland CPC	327	239	73.1	33.5	41.8	55.2	32.6	74.9	56.3	93.1	94.7
Sagamore Children's Psych Ctr	199	176	88.4	57.4	33.0	64.8	43.8	77.6	57.1	90.6	92.8
South Beach PC	20	20	100.0	85.0	45.0	50.0	40.0	67.5	41.6	97.1	98.6
St. Lawrence Psychiatric Center	257	230	89.5	77.4	46.1	51.3	31.3	73.7	54.9	94.1	97.2
Western NY CPC	43	43	100.0	79.1	37.2	58.1	39.5	70.1	38.9	95.5	97.5
-- Grand Total --	2,120	1,814	85.6	64.2	42.2	54.9	35.5	73.7	53.0	93.5	96.0

Note: Youth included in these reports are in the care of NYS OMH operated outpatient Clinic and Day Treatment Programs.

Youth discharged within 30 days of the report date are excluded from analysis.

For these reports, the Overweight Category includes those youth categorized as Obese.

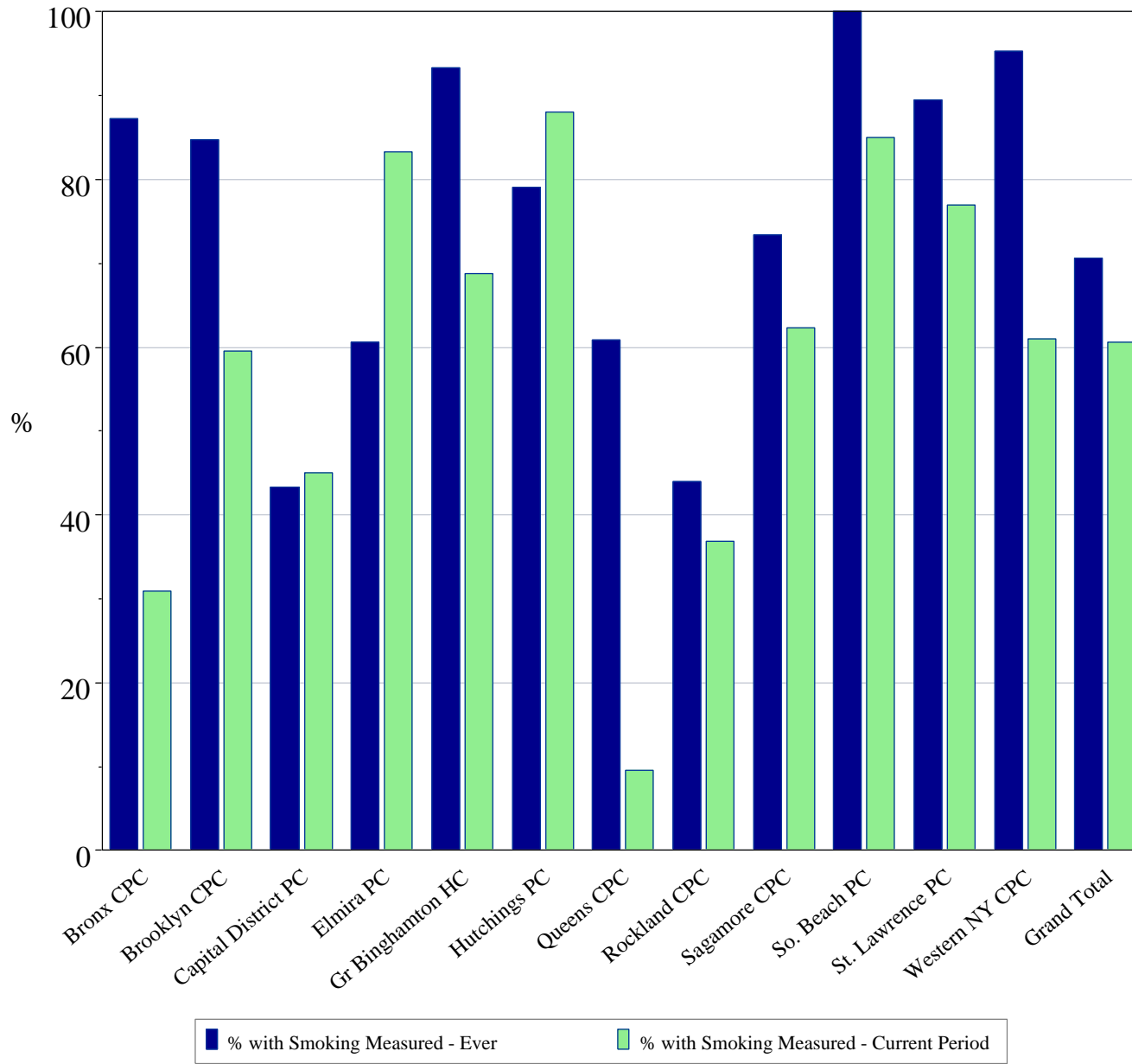
For indicator definitions, see "About Reports".

Data Source: MHARS as of Jun 30th, 2011.

Current Period is Apr 1 - Jun 30, 2011.

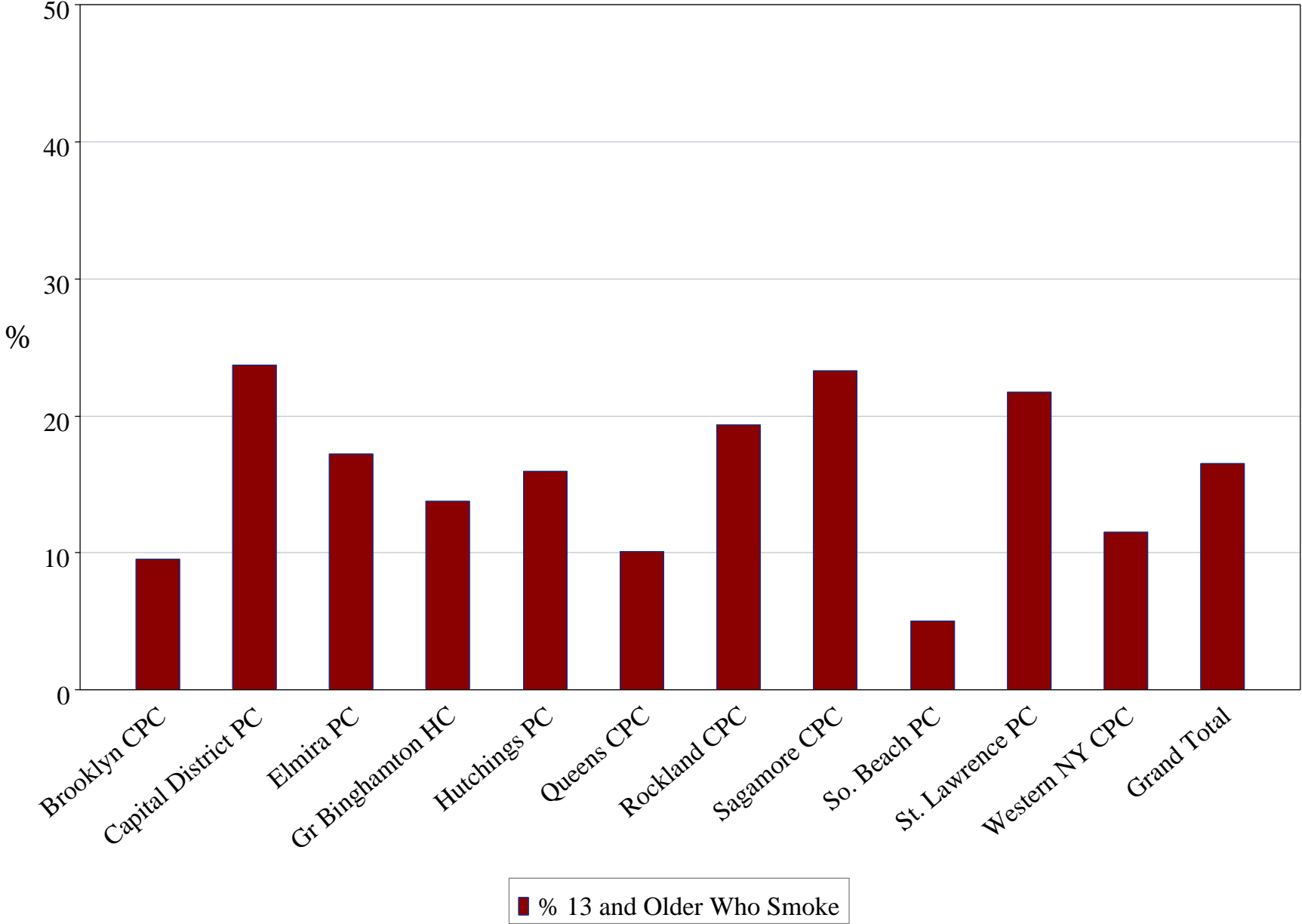
Youth Health Indicators

Graph 8. Youth Outpatients (All Ages) with Smoking Measured Ever vs Current Period



Data Source: MHARS as of Jun 30th, 2011.
 Current Period is Apr 1 - Jun 30, 2011.

Graph 9. Percent of Youth Outpatients Aged 13 and Older who Smoke



Data Source: MHARS as of Jun 30th, 2011.
Current Period is Apr 1 - Jun 30, 2011.

Youth Health Indicators

Table 5. Youth Smoking Measure (All Ages) by Facility

Facility	# Youth	# Smoking Measured	% Smoking Measured	% Smoking Measured Current Period	# Positive Smoking	% Positive Smoking
Bronx CPC	63	55	87.3	30.9	0.0	0.0
Brooklyn CPC	105	89	84.8	59.6	6.0	6.7
Capital District PC	231	100	43.3	45.0	18.0	18.0
Elmira Psychiatric Center	109	66	60.6	83.3	10.0	15.2
Greater Binghamton Health Center	288	269	93.4	68.8	20.0	7.4
Hutchings Psychiatric Center	253	200	79.1	88.0	18.0	9.0
Queens CPC	225	137	60.9	9.5	8.0	5.8
Rockland CPC	327	144	44.0	36.8	18.0	12.5
Sagamore Children's Psych Ctr	199	146	73.4	62.3	31.0	21.2
South Beach PC	20	20	100.0	85.0	1.0	5.0
St. Lawrence Psychiatric Center	257	230	89.5	77.0	26.0	11.3
Western NY CPC	43	41	95.4	61.0	3.0	7.3
-- Grand Total --	2,120	1,497	70.6	60.6	159.0	10.6

Note: Youth included in these reports are in the care of NYS OMH operated outpatient Clinic and Day Tmt Prgms.

Youth discharged within 30 days of the report date are excluded from analysis.

Smoking indicator is self report of Yes to smoking in the last month.

Data Source: MHARS as of Jun 30th, 2011.

Current Period is Apr 1 - Jun 30, 2011.

Youth Health Indicators

Table 6. Youth Smoking Measure by Age Group by Facility

Facility	- 13 and Over -				- 12 and Under -			
	# Youth 13 & Over	# Smoking Measured	% Smoking Measured	% Positive Smoking	# Youth 12 & Under	# Smoking Measured	% Smoking Measured	% Positive Smoking
Bronx CPC	39	35	89.7	0.0	24	20	83.3	0.0
Brooklyn CPC	75	63	84.0	9.5	30	26	86.7	0.0
Capital District PC	110	76	69.1	23.7	121	24	19.8	0.0
Elmira Psychiatric Center	60	58	96.7	17.2	49	8	16.3	0.0
Greater Binghamton Health Center	157	145	92.4	13.8	131	124	94.7	0.0
Hutchings Psychiatric Center	132	113	85.6	15.9	121	87	71.9	0.0
Queens CPC	103	79	76.7	10.1	122	58	47.5	0.0
Rockland CPC	136	93	68.4	19.4	191	51	26.7	0.0
Sagamore Children's Psych Ctr	150	133	88.7	23.3	49	13	26.5	0.0
South Beach PC	20	20	100.0	5.0
St. Lawrence Psychiatric Center	131	115	87.8	21.7	126	115	91.3	0.9
Western NY CPC	28	26	92.9	11.5	15	15	100.0	0.0
-- Grand Total --	1,141	956	83.8	16.5	979	541	55.3	0.2

Note: Youth included in these reports are in the care of NYS OMH operated outpatient Clinic and Day Treatment Programs.

Youth discharged within 30 days of the report date are excluded from analysis.

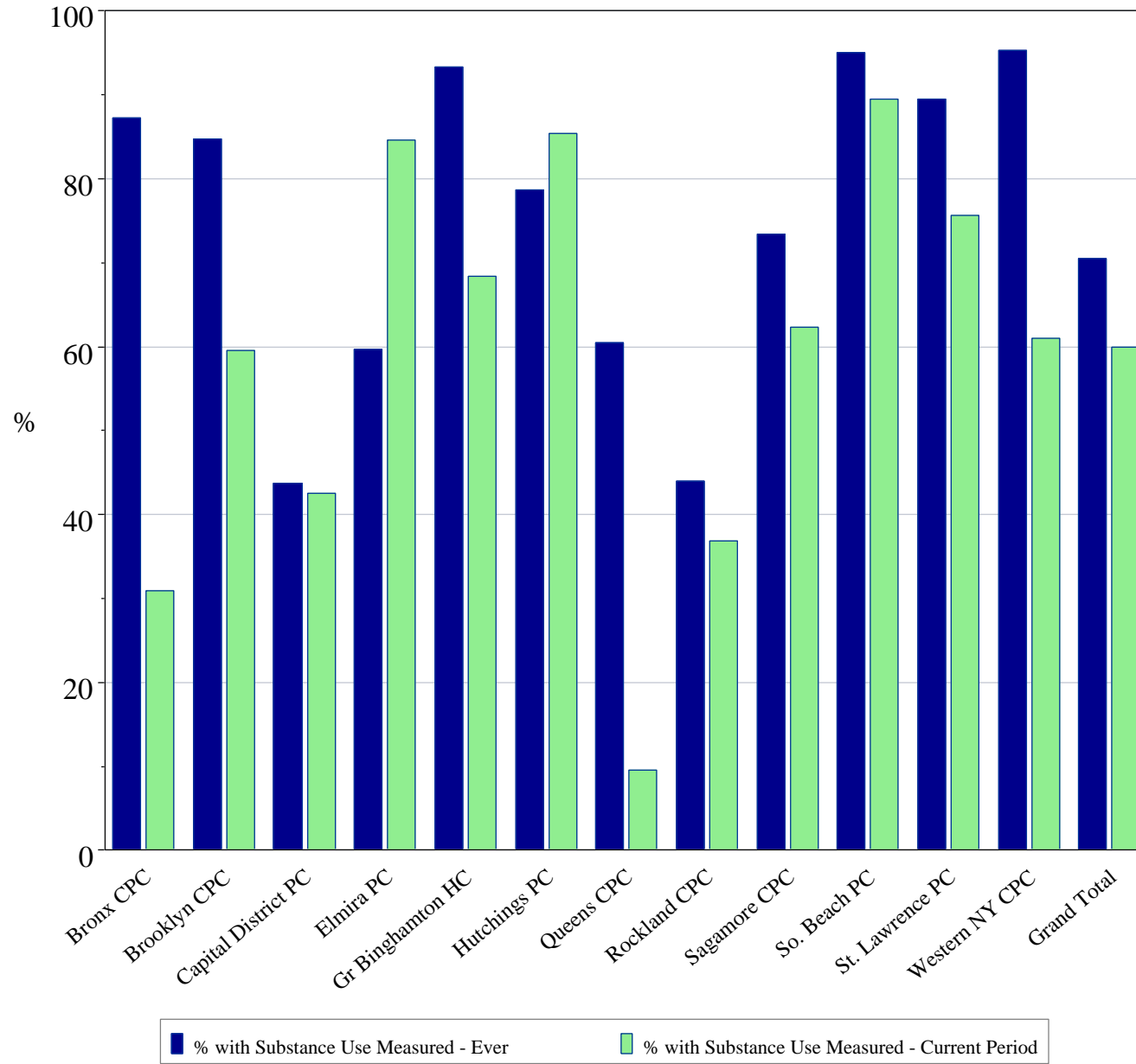
Smoking indicator is self report of Yes to smoking in the last month.

Data Source: MHARS as of Jun 30th, 2011.

Current Period is Apr 1 - Jun 30, 2011.

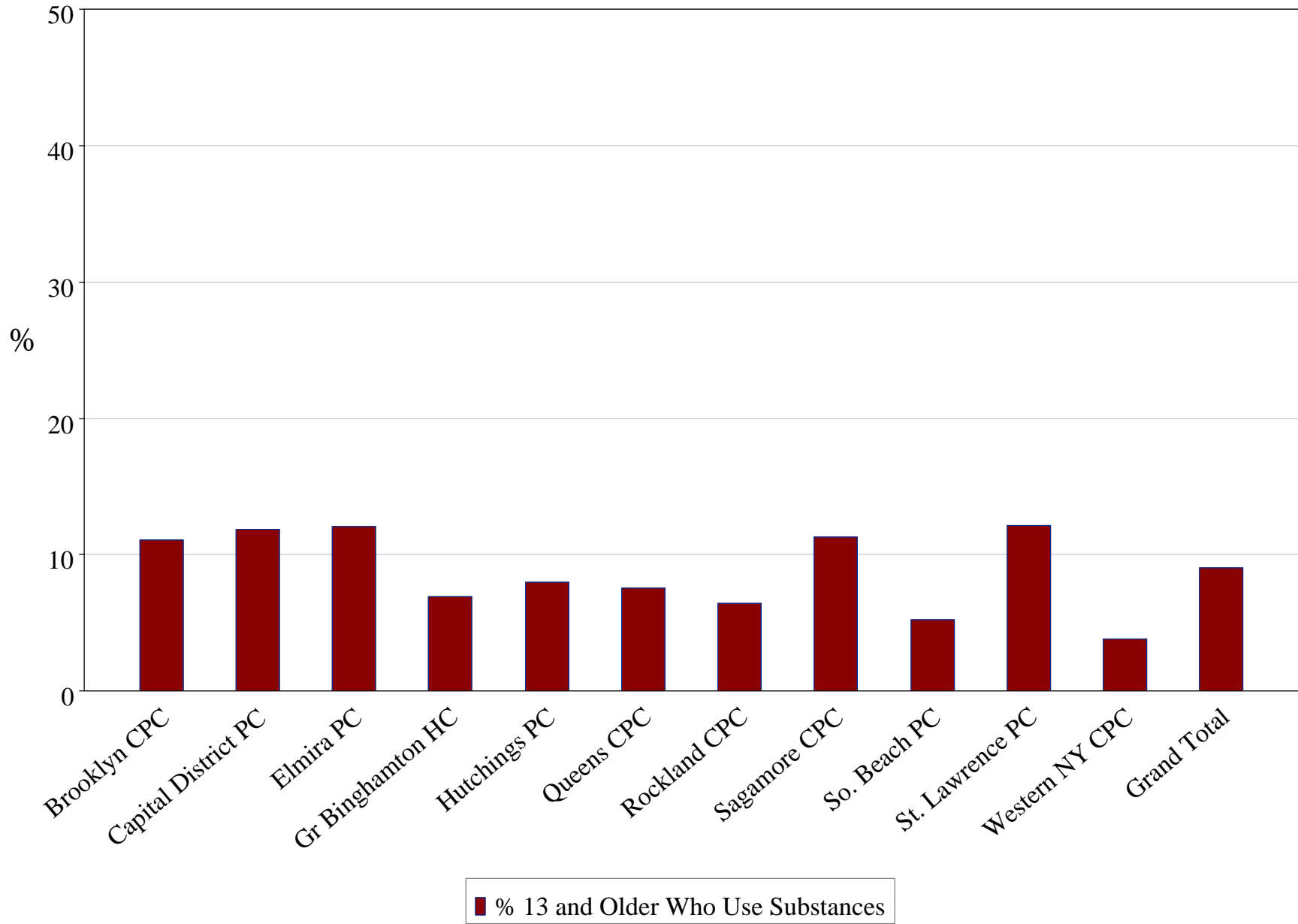
Youth Health Indicators

Graph 10. Youth Outpatients (All Ages) with Substance Use Measured Ever vs Current Period



Data Source: MHARS as of Jun 30th, 2011.
 Current Period is Apr 1 - Jun 30, 2011.

Graph 11. Percent of Youth Outpatients Aged 13 and Older who Use Substances



Data Source: MHARS as of Jun 30th, 2011.
Current Period is Apr 1 - Jun 30, 2011.

Youth Health Indicators

Table 7. Youth Substance Use (All Ages) by Facility

Facility	# Youth	# Substance Use Measured	% Substance Use Measured	% Subst Use Measured Current Period	# Positive Substance Use	% Positive Substance Use
Bronx CPC	63	55	87.3	30.9	1.0	1.8
Brooklyn CPC	105	89	84.8	59.6	8.0	9.0
Capital District PC	231	101	43.7	42.6	9.0	8.9
Elmira Psychiatric Center	109	65	59.6	84.6	7.0	10.8
Greater Binghamton Health Center	288	269	93.4	68.4	10.0	3.7
Hutchings Psychiatric Center	253	199	78.7	85.4	9.0	4.5
Queens CPC	225	136	60.4	9.6	6.0	4.4
Rockland CPC	327	144	44.0	36.8	6.0	4.2
Sagamore Children's Psych Ctr	199	146	73.4	62.3	15.0	10.3
South Beach PC	20	19	95.0	89.5	1.0	5.3
St. Lawrence Psychiatric Center	257	230	89.5	75.7	14.0	6.1
Western NY CPC	43	41	95.4	61.0	1.0	2.4
-- Grand Total --	2,120	1,494	70.5	59.9	87.0	5.8

Note: Youth included in these reports are in the care of NYS OMH operated outpatient Clinic and Day Tmt Prgms.

Youth discharged within 30 days of the report date are excluded from analysis.

Substance Use indicator is self report of Yes to using substances in the last month.

Data Source: MHARS as of Jun 30th, 2011.

Current Period is Apr 1 - Jun 30, 2011.

Youth Health Indicators

Table 8. Youth Substance Use by Age Group by Facility

Facility	- 13 and Over -				- 12 and Under -			
	# Youth 13 & Over	# Sub Use Measured	% Sub Use Measured	% Positive Sub Use	# Youth 12 & Under	# Sub Use Measured	% Sub Use Measured	% Positive Sub Use
Bronx CPC	39	35	89.7	2.9	24	20	83.3	0.0
Brooklyn CPC	75	63	84.0	11.1	30	26	86.7	3.9
Capital District PC	110	76	69.1	11.8	121	25	20.7	0.0
Elmira Psychiatric Center	60	58	96.7	12.1	49	7	14.3	0.0
Greater Binghamton Health Center	157	145	92.4	6.9	131	124	94.7	0.0
Hutchings Psychiatric Center	132	113	85.6	8.0	121	86	71.1	0.0
Queens CPC	103	79	76.7	7.6	122	57	46.7	0.0
Rockland CPC	136	93	68.4	6.5	191	51	26.7	0.0
Sagamore Children's Psych Ctr	150	133	88.7	11.3	49	13	26.5	0.0
South Beach PC	20	19	95.0	5.3
St. Lawrence Psychiatric Center	131	115	87.8	12.2	126	115	91.3	0.0
Western NY CPC	28	26	92.9	3.9	15	15	100.0	0.0
-- Grand Total --	1,141	955	83.7	9.0	979	539	55.1	0.2

Note: Youth included in these reports are in the care of NYS OMH operated outpatient Clinic and Day Treatment Programs.

Youth discharged within 30 days of the report date are excluded from analysis.

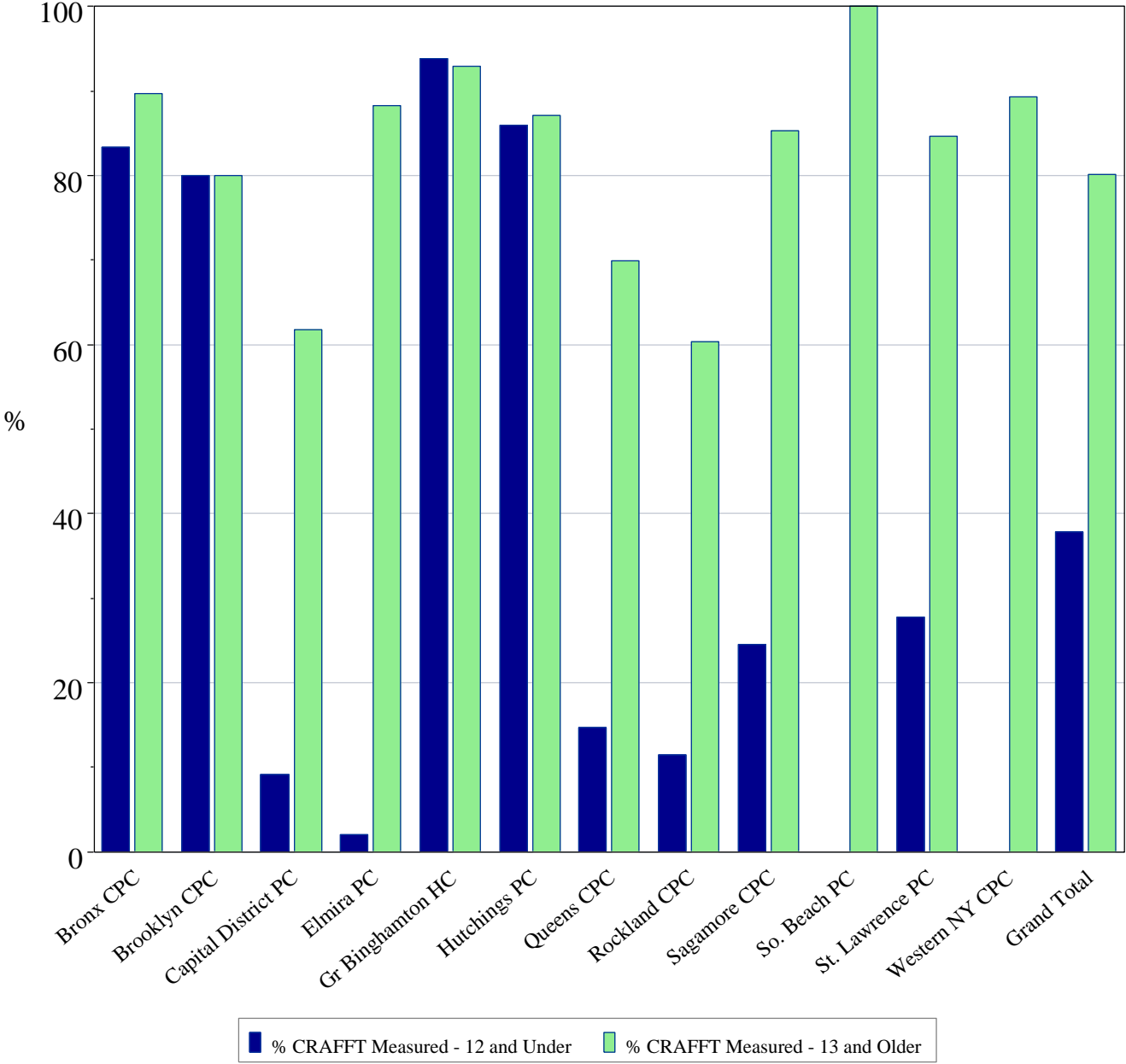
Substance Use indicator is self report of Yes to using substances in the last month.

Data Source: MHARS as of Jun 30th, 2011.

Current Period is Apr 1 - Jun 30, 2011.

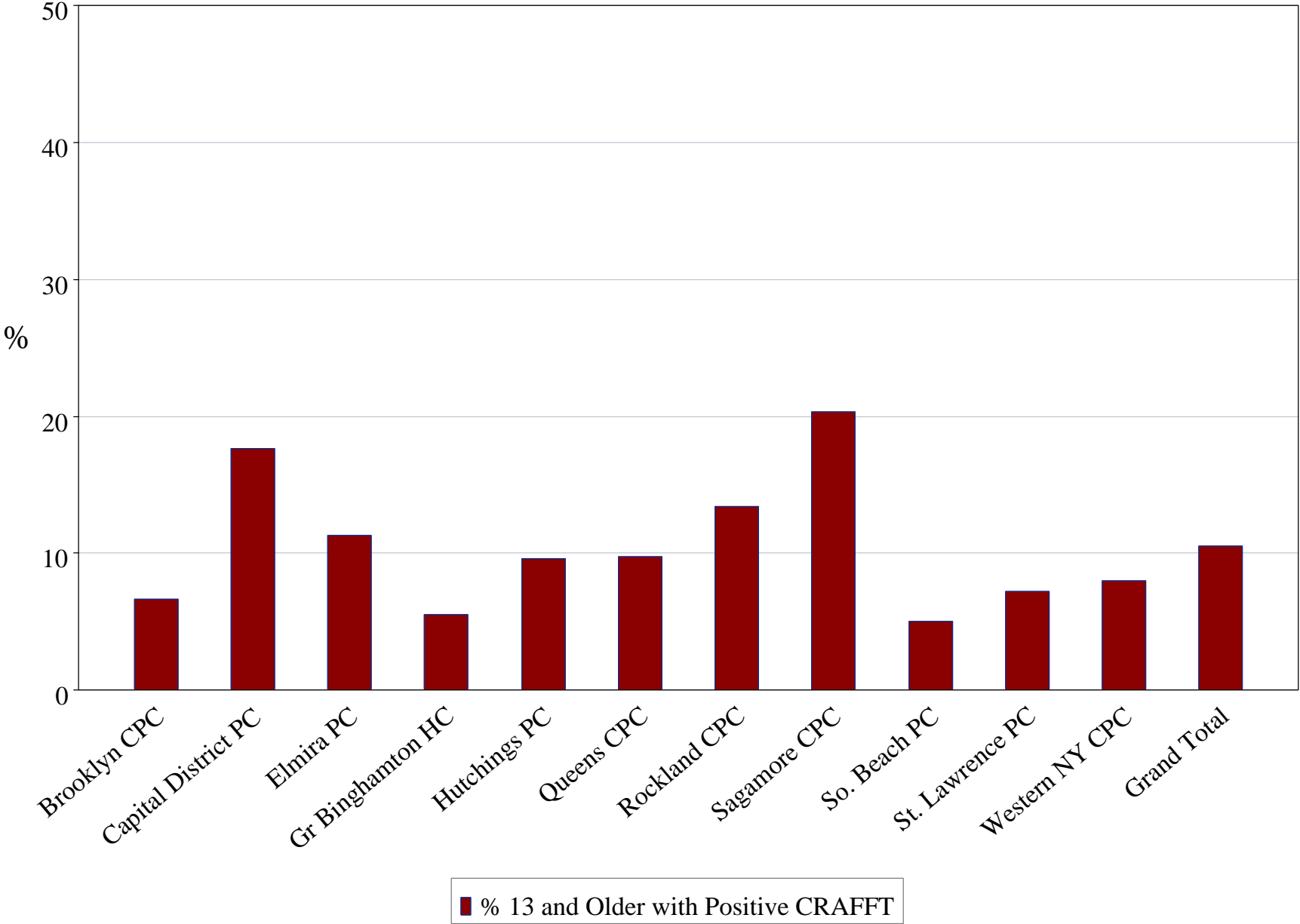
Youth Health Indicators

Graph 12. Youth CRAFFT Measurement - Older vs Younger Youth



Data Source: MHARS as of Jun 30th, 2011.
 Current Period is Apr 1 - Jun 30, 2011.

Graph 13. Percent of Youth Outpatients Aged 13 and Older who Have a Positive CRAFFT



Data Source: MHARS as of Jun 30th, 2011.
Current Period is Apr 1 - Jun 30, 2011.

Youth Health Indicators

Table 9. CRAFFT Measurement (All Ages) by Facility

Facility	# Youth	# CRAFFT Measured	% CRAFFT Measured (ever)	% CRAFFT Measured within Last Year	# Positive CRAFFT	% Positive CRAFFT
Bronx CPC	63	55	87.3	63.6	0.0	0.0
Brooklyn CPC	105	84	80.0	77.4	5.0	6.0
Capital District PC	231	79	34.2	74.7	12.0	15.2
Elmira Psychiatric Center	109	54	49.5	81.5	6.0	11.1
Greater Binghamton Health Center	288	269	93.4	85.9	8.0	3.0
Hutchings Psychiatric Center	253	219	86.6	98.6	11.0	5.0
Queens CPC	225	90	40.0	68.9	7.0	7.8
Rockland CPC	327	104	31.8	64.4	11.0	10.6
Sagamore Children's Psych Ctr	199	140	70.4	80.0	26.0	18.6
South Beach PC	20	20	100.0	100.0	1.0	5.0
St. Lawrence Psychiatric Center	257	146	56.8	92.5	8.0	5.5
Western NY CPC	43	25	58.1	92.0	2.0	8.0
-- Grand Total --	2,120	1,285	60.6	83.2	97.0	7.6

Note: Youth included in these reports are in the care of NYS OMH operated outpatient Clinic and Day Tmt Programs. Youth discharged within 30 days of the report date are excluded from analysis.

CRAFFT indicator is based off Behavioral Health Screening Tool (see About Reports).

Data Source: MHARS as of Jun 30th, 2011.

Current Period is Apr 1 - Jun 30, 2011.

Youth Health Indicators

Table 10. CRAFFT Measurement by Age Group by Facility

Facility	- 13 and Over -				- 12 and Under -			
	# Youth 13 & Over	# CRAFFT Measured	% CRAFFT Measured	% Positive CRAFFT	# Youth 12 & Under	# CRAFFT Measured	% CRAFFT Measured	% Positive CRAFFT
Bronx CPC	39	35	89.7	0.0	24	20	83.3	0.0
Brooklyn CPC	75	60	80.0	6.7	30	24	80.0	4.2
Capital District PC	110	68	61.8	17.7	121	11	9.1	0.0
Elmira Psychiatric Center	60	53	88.3	11.3	49	1	2.0	0.0
Greater Binghamton Health Center	157	146	93.0	5.5	131	123	93.9	0.0
Hutchings Psychiatric Center	132	115	87.1	9.6	121	104	86.0	0.0
Queens CPC	103	72	69.9	9.7	122	18	14.8	0.0
Rockland CPC	136	82	60.3	13.4	191	22	11.5	0.0
Sagamore Children's Psych Ctr	150	128	85.3	20.3	49	12	24.5	0.0
South Beach PC	20	20	100.0	5.0
St. Lawrence Psychiatric Center	131	111	84.7	7.2	126	35	27.8	0.0
Western NY CPC	28	25	89.3	8.0	15	.	.	.
-- Grand Total --	1,141	915	80.2	10.5	979	370	37.8	0.3

Note: Youth included in these reports are in the care of NYS OMH operated outpatient Clinic and Day Treatment Programs.

Youth discharged within 30 days of the report date are excluded from analysis.

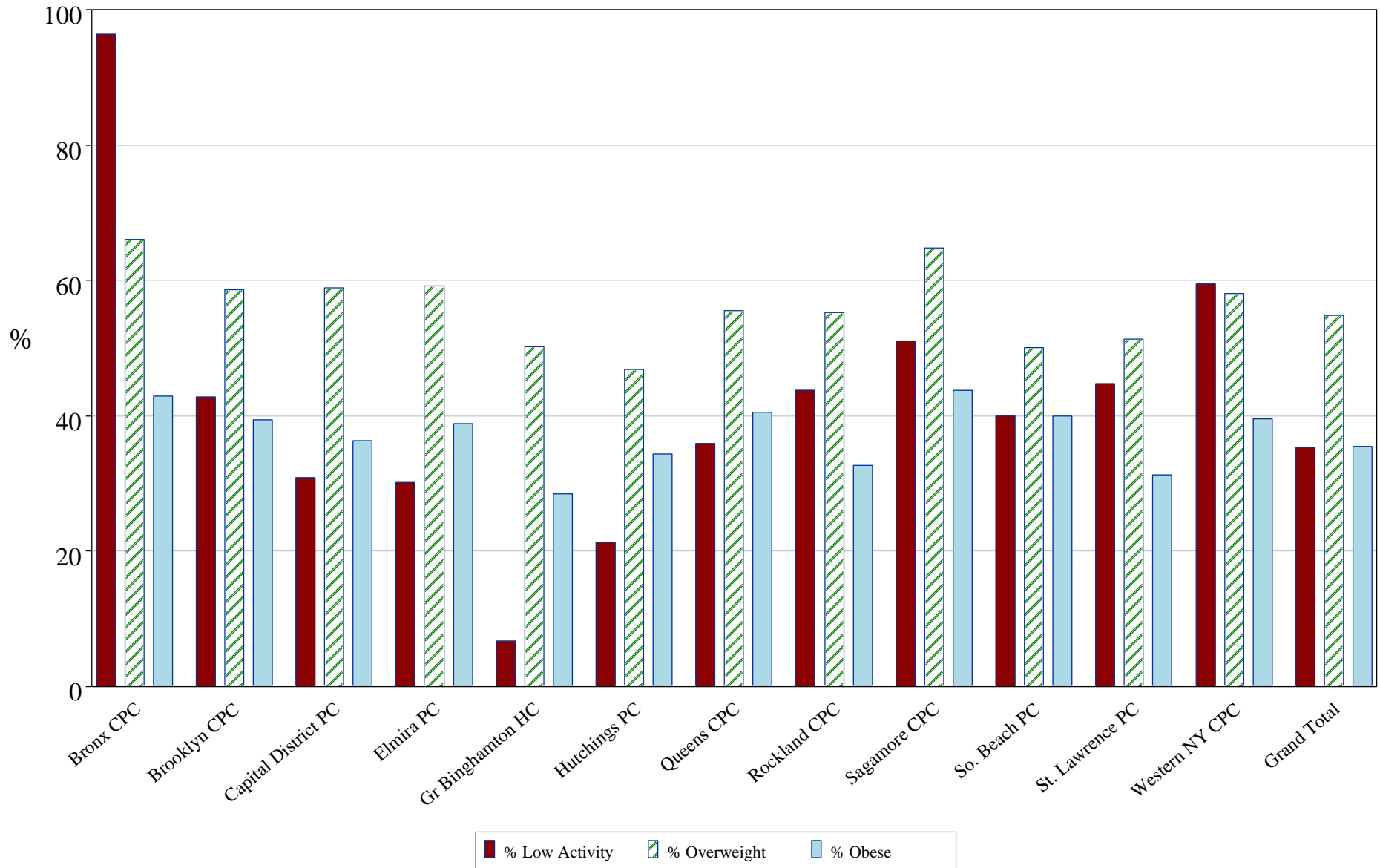
CRAFFT indicator is based off Behavioral Health Screening Tool (see About Reports).

Data Source: MHARS as of Jun 30th, 2011.

Current Period is Apr 1 - Jun 30, 2011.

Youth Health Indicators

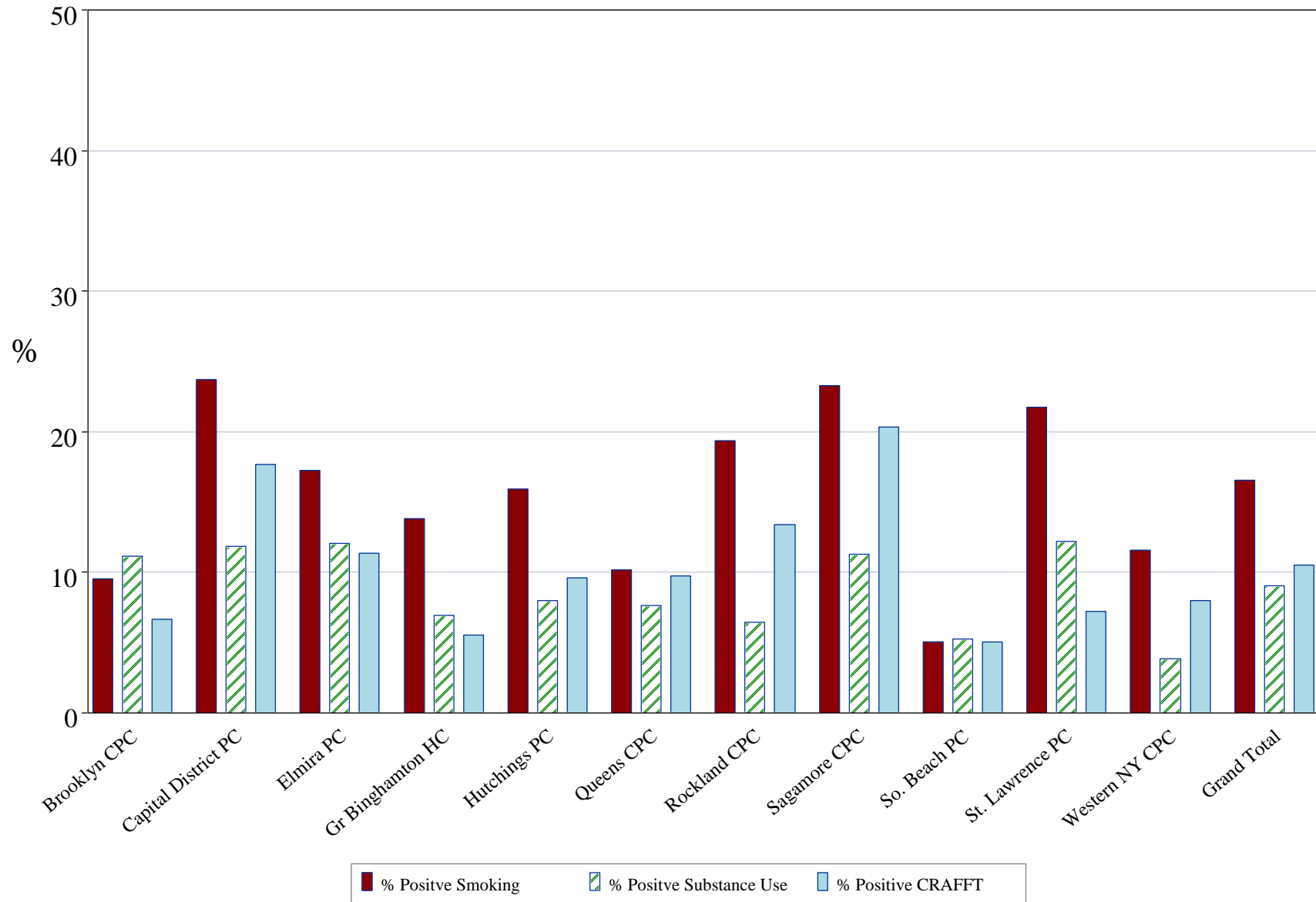
Graph 14. Rates of Low Activity Overweight and Obesity in Youth Outpatients



Data Source: MHARS as of Jun 30th, 2011
 Note: Low Activity is < 60 min. of physical activity per day, Overweight is BMI >= 85th percentile, Obesity is BMI >= 95th
 Current Period is Apr 1 - Jun 30, 2011.

Youth Health Indicators

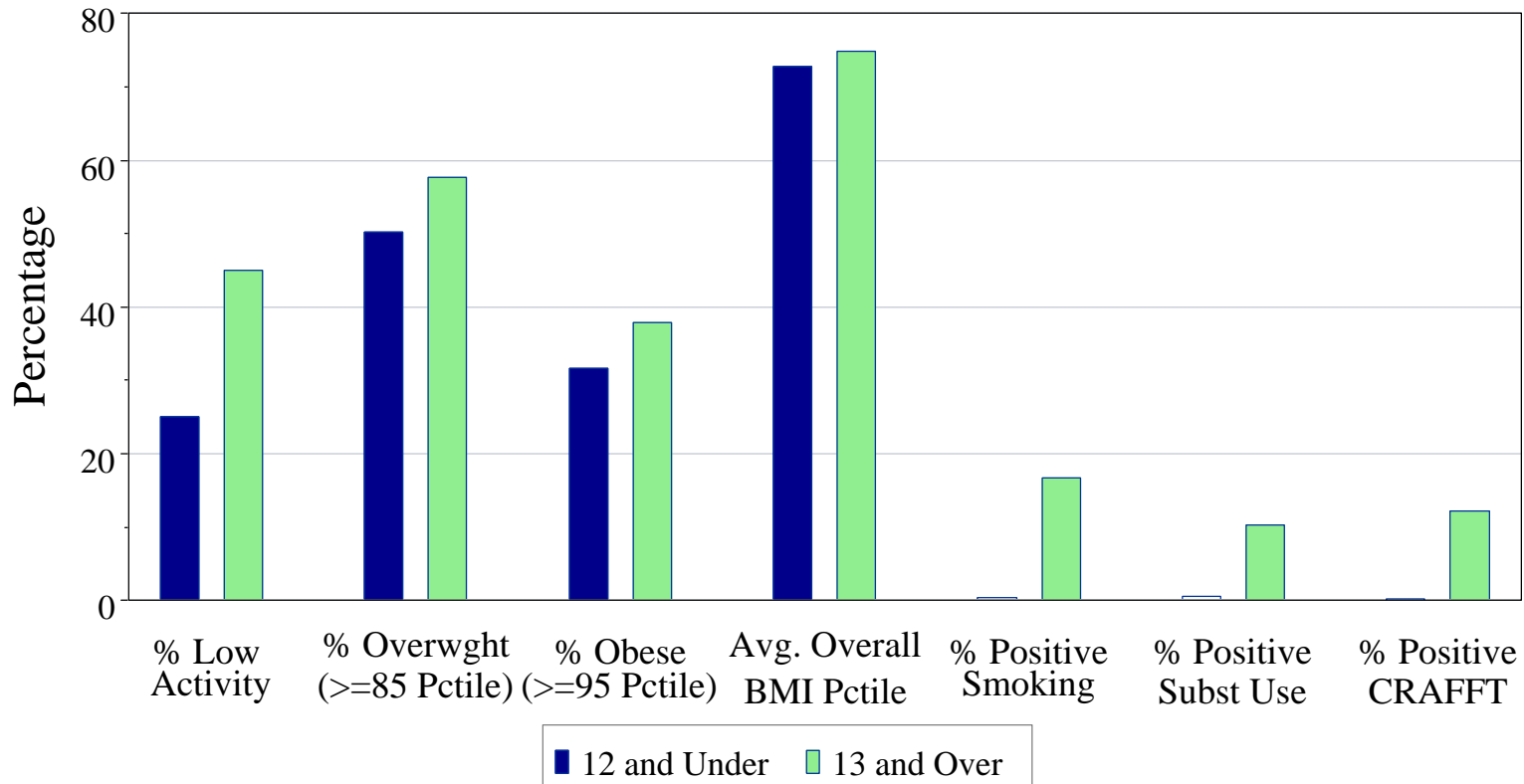
Graph15. Rates of Smoking & Substance Use & CRAFFT in Youth Outpatients 13 & Older



Data Source: MHARS as of Jun 30th, 2011.
 Current Period is Apr 1 - Jun 30, 2011.

Youth Health Indicators

Graph 16. Statewide Age Comparison



Age Group	# Youth	# Activity Measured	% Low Activity	# BMI Measured	Avg. Overall Pctile	% Ovrwgt (>=85 Pctile)	% Obese (>=95 Pctile)	# Smoking Measured	% Positive Smoking	# Subst Use Measured	% Postiv Subst Use	# CRAFFT Measured	% Positive CRAFFT
1. 12 and Under	983	794	25.1	827	72.8	50.2	31.6	534	0.4	531	0.6	360	0.3
2. 13 and Over	1,109	932	45.0	946	74.8	57.7	38.0	916	16.7	917	10.4	874	12.1
Grand Total	2,092	1,726	35.8	1,773	73.9	54.2	35.0	1,450	10.7	1,448	6.8	1,234	8.7

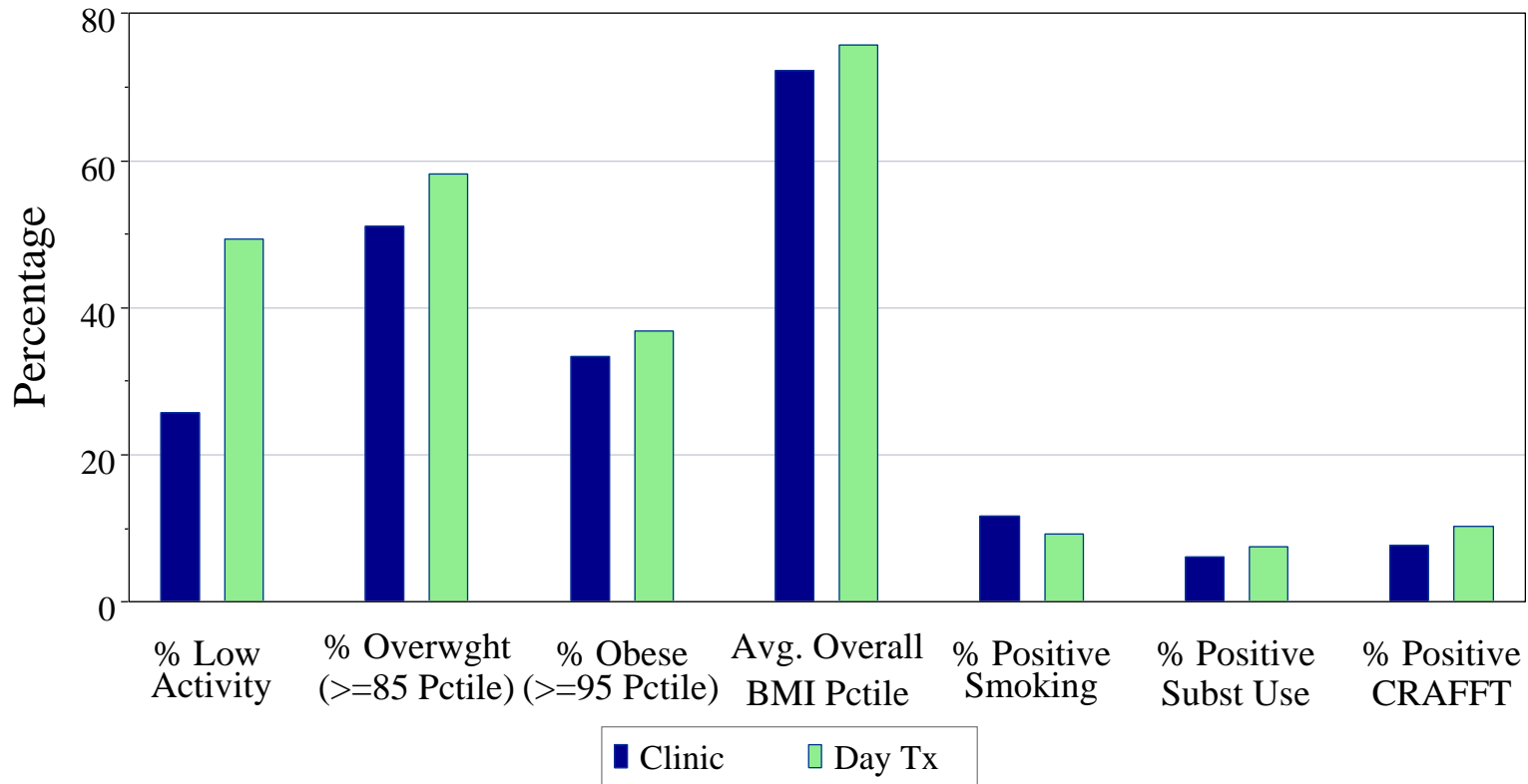
Youth included in these reports are in the care of NYS OMH operated outpatient Clinic and DayTreatment Programs.

Youth discharged within 30 days of the report date are excluded from analysis.

Data Source: MHARS as of Jun 30th, 2011.

Youth Health Indicators

Graph 17. Statewide Program Type Comparison



Program Type	# Youth	# Activity Measured	% Low Activity	# BMI Measured	Avg. Overall Pctile	% Ovrwgt (>=85 Pctile)	% Obese (>=95 Pctile)	# Smoking Measured	% Positive Smoking	# Subst Use Measured	% Postiv Subst Use	# CRAFFT Measured	% Positive CRAFFT
Clinic (210)	1,137	991	25.7	993	72.3	51.1	33.4	828	11.7	829	6.2	747	7.6
Day Tmt (200)	955	735	49.4	780	75.8	58.2	36.9	622	9.3	619	7.6	487	10.3
Grand Total	2,092	1,726	35.8	1,773	73.9	54.2	35.0	1,450	10.7	1,448	6.8	1,234	8.7

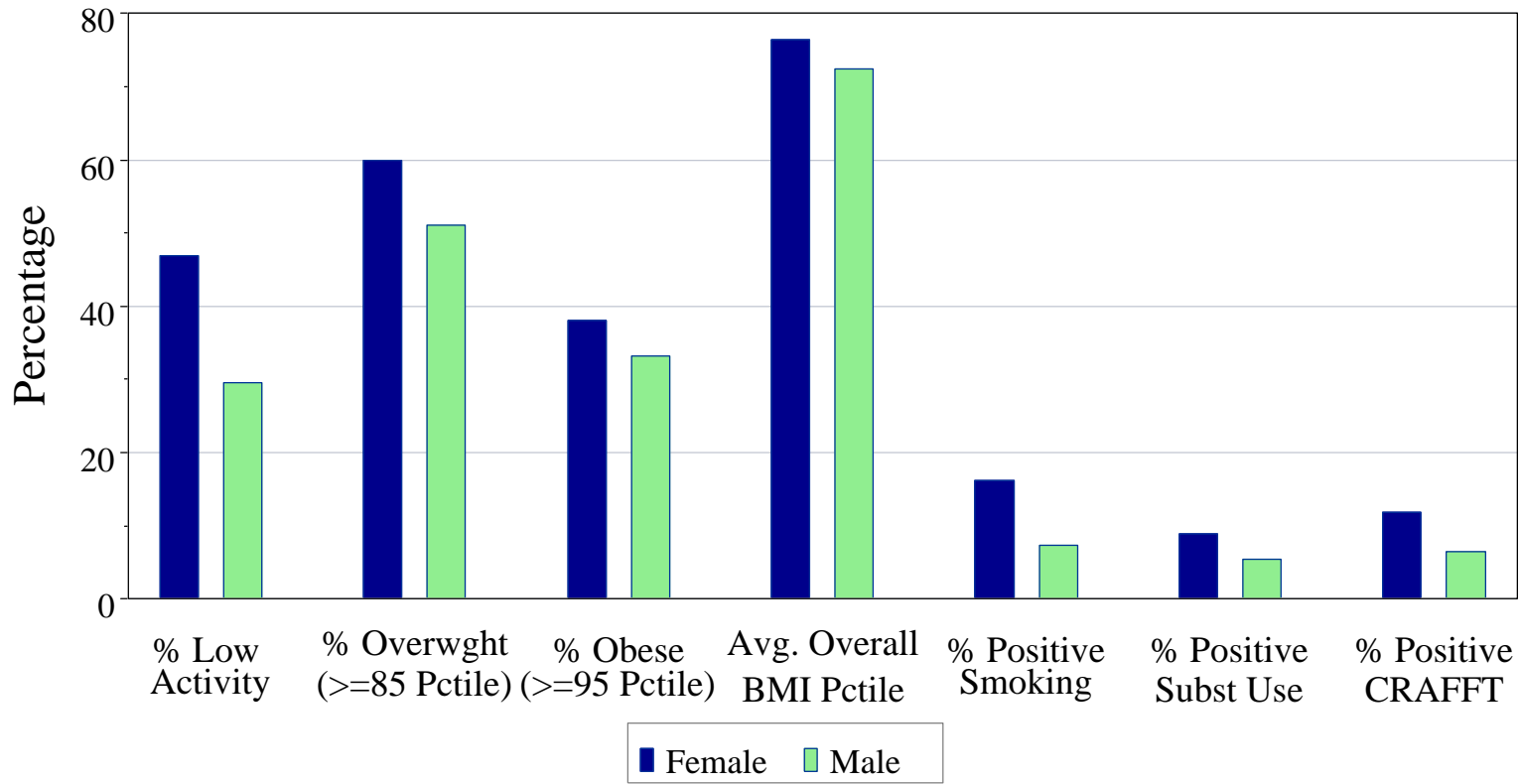
Youth included in these reports are in the care of NYS OMH operated outpatient Clinic and DayTreatment Programs.

Youth discharged within 30 days of the report date are excluded from analysis.

Data Source: MHARS as of Jun 30th, 2011.

Youth Health Indicators

Graph 18. Statewide Gender Comparison



Gender	# Youth	# Activity Measured	% Low Activity	# BMI Measured	Avg. Overall Pctile	% Ovrwgt (>=85 Pctile)	% Obese (>=95 Pctile)	# Smoking Measured	% Positive Smoking	# Subst Use Measured	% Postiv Subst Use	# CRAFFT Measured	% Positive CRAFFT
Female	748	621	46.9	627	76.5	60.0	38.1	556	16.2	557	9.0	495	11.9
Male	1,344	1,105	29.6	1,146	72.4	51.1	33.3	894	7.3	891	5.4	739	6.5
Grand Total	2,092	1,726	35.8	1,773	73.9	54.2	35.0	1,450	10.7	1,448	6.8	1,234	8.7

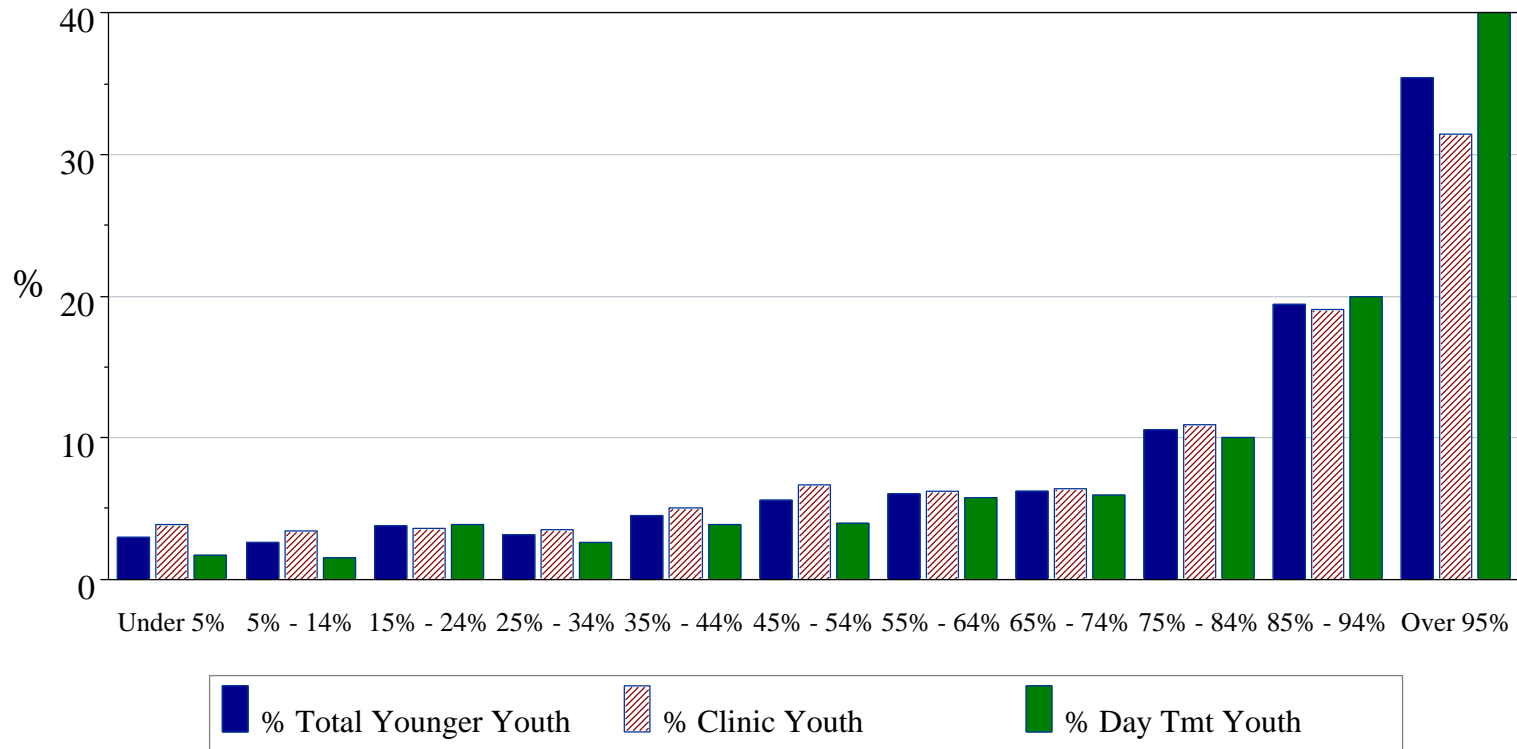
Youth included in these reports are in the care of NYS OMH operated outpatient Clinic and DayTreatment Programs.

Youth discharged within 30 days of the report date are excluded from analysis.

Data Source: MHARS as of Jun 30th, 2011.

Youth Health Indicators

Graph 19. Distribution of BMI Percentile for Youth (Ages 17 and Younger) by Program Type



Data Source: MHARS as of Jun 30th, 2011.

Youth Health Indicators

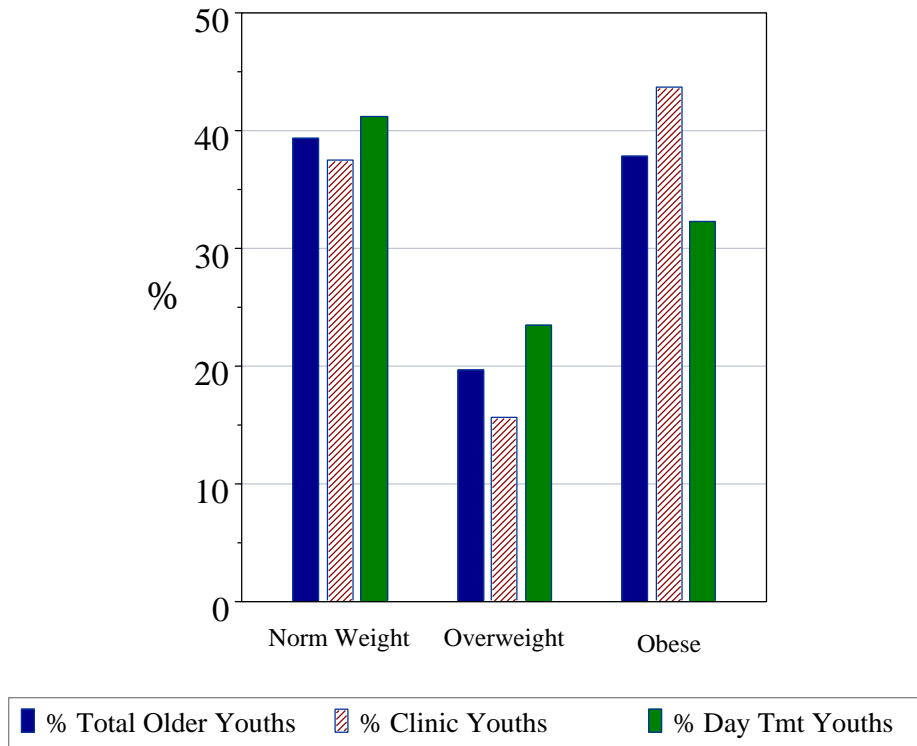
Table 11. Distribution of BMI Percentile for Youth (Ages 17 and Younger) by Program Type

BMI Percentile	Total Youth		Clinic Youth		Day Tmt Youth	
	Count	Percent	Count	Percent	Count	Percent
Under 5%	51	3%	39	4%	12	2%
5% - 14%	46	3%	35	3%	11	2%
15% - 24%	65	4%	37	4%	28	4%
25% - 34%	55	3%	36	4%	19	3%
35% - 44%	79	5%	51	5%	28	4%
45% - 54%	97	6%	68	7%	29	4%
55% - 64%	105	6%	63	6%	42	6%
65% - 74%	108	6%	65	6%	43	6%
75% - 84%	184	11%	111	11%	73	10%
85% - 94%	339	19%	194	19%	145	20%
Over 95%	619	35%	321	31%	298	41%
17 and under Total	1,748	100%	1,020	100%	728	100%

Note: There were 297 youths missing BMI Measurements (Clinic 156; Day Tx 141)
 Data Source: MHARS as of Jun 30th, 2011.

Youth Health Indicators

Graph 20. Distribution of BMI for Youth (Ages 18 and Older) by Program Type



BMI Category	Total Youth		Clinic Youth		Day Tmt Youth	
	Count	Percent	Count	Percent	Count	Percent
Under Weight	2	3%	1	3%	1	3%
Norm Weight	26	39%	12	38%	14	41%
Overweight (25.0 - 29.9)	13	20%	5	16%	8	24%
Obese (30 and above)	25	38%	14	44%	11	32%
18 and over Total	66	100%	32	100%	34	100%

Note: There were 9 older youths missing BMI Measurements (Clinic 2; Day Tx 7)
 Data Source: MHARS as of Jun 30th, 2011.